

Wechselventile -Metallbalg-

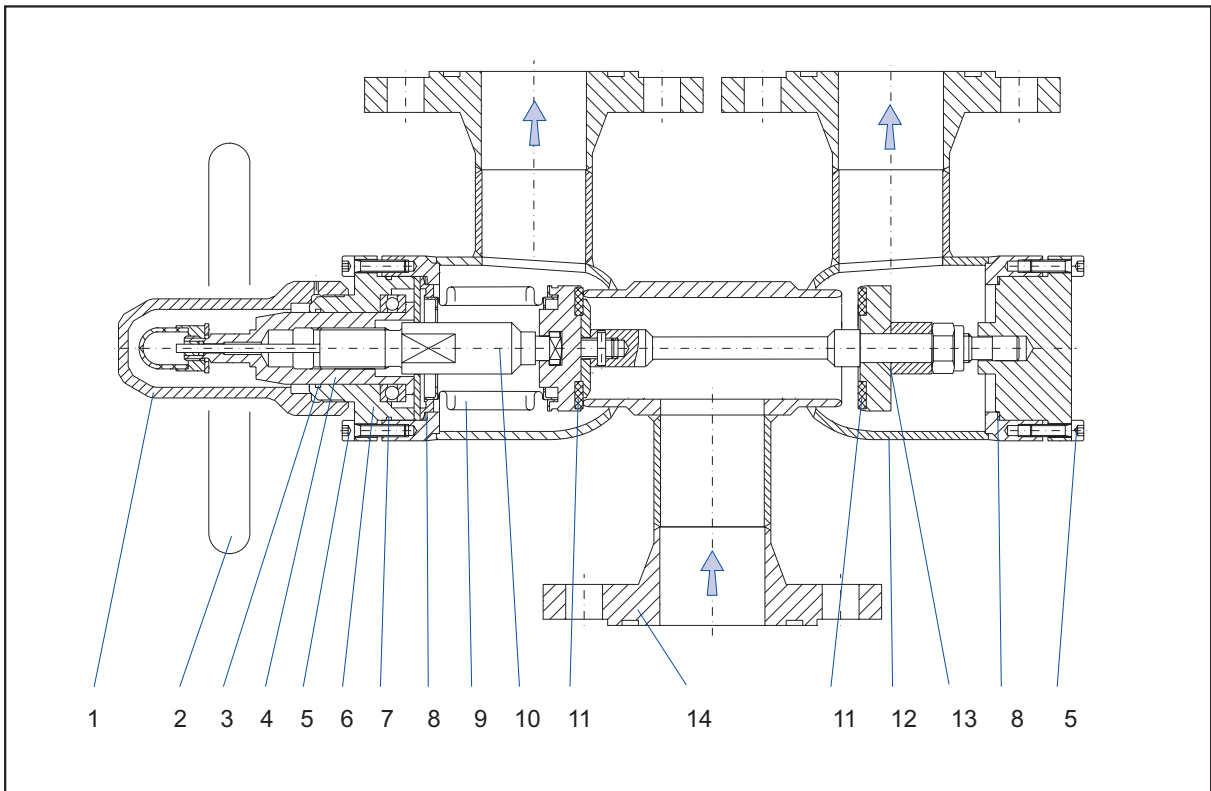
WVB

3 - way - valves -metal bellow-

PN	DN	TB(MWT) [°C]	- 60	- 10	+ 50	+ 150
40	10 - 32	PB(MWP) [bar]	30	40	40	40
25	40 - 100		18,7	25	25	25

- mit Stellungsanzeige

- with position indicator



Pos.	Teil / part		Material
1	Kappe	cap	3.2341
2	Handrad	handwheel	Stahlblech / sheet steel
3	O-Ring A	O-ring seal A	CR-70
4	Mitnehmerhülse	driving sleeve	1.4305
5	Schrauben	screws	8.8 / A2 - 70
6	Deckel	cover	1.0038 1.4305
7	O-Ring B	O-ring B	CR-70
8	Flachdichtring K	flat sealing ring K	3.0255 / PTFE
9	Metallbalg	metal bellows	1.4541
10	Spindel	stem	1.0503 / 1.0060 1.4305
11	Flachdichtring S	flat sealing ring S	PTFE
12	Gehäuse	body	1.0305 / 1.0038 1.4541 / 1.4301
13	O-Ring C	o-ring C	CR-70
14	Flansche	flanges	1.0460

Wechselventil -Metallbalg-

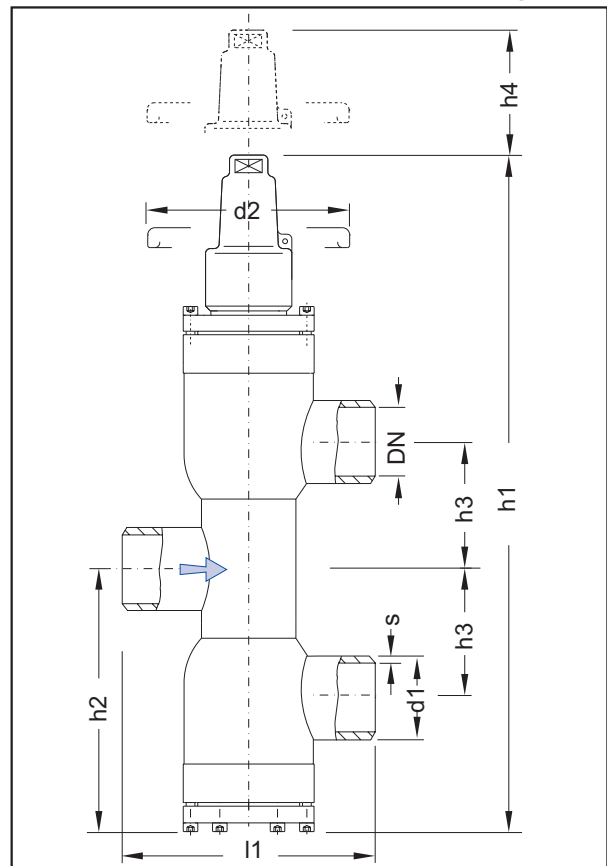
WVB

3 - way - valve -metal bellow-

Anschweißenden

welding ends

230 00



Einbaulängen / lengths in mm :

DN	Anschweißenden / welding ends						l1	h1	h2	h3	h4	d2
	Reihe 1/ range 1		Reihe 2/ range 2		ANSI Sched 40							
	d1	s	d1	s	d1	s						
10	17,2	1,8	15,0	2,5	17,1	2,3	125	370	117	54,0	170	100
15	21,3	2,0	20,0	2,5	21,3	2,8	119	370	117	60,0	170	100
20	26,9	2,3	25,0	2,5	16,7	2,9	139	370	117	60,0	170	100
25	33,7	2,6	32,0	3,0	33,4	3,4	98	407	140	80,0	215	125
32	42,4	2,6	38,0	3,0	42,2	3,6	108	423	148	90,0	215	125
40	48,3	2,6	45,0	3,0	48,3	3,7	127	472	178	107,0	240	150
50	60,3	2,9	57,0	3,2	60,3	3,9	134	486	178	114,0	240	150
65	76,1	2,9	76,1	3,6	76,1	5,2	161	558	224	138,0	270	200
80	88,9	3,2	88,9	4,0	88,9	5,5	188	721	288	162,5	290	200
100	114,3	3,6	108,0	4,0	114,3	6,0	228	730	293	196,5	300	200

Varianten / variants :

DN	Werkstoff material	Ausführung / design		Anschweißenden / welding ends	
		Handrad handwheel	Kappe cap	Eingang / inlet	Ausgang / outlet
10	40	1.0305	Handrad	Kappe	Reihe 1/ range 1 Reihe 2/ range 2 ANSI Schedule 40
15	50	1.4301	handwheel	cap	
20	65		-	-	
25	80		x	-	
32	100		-	x	

Wechselventil -Metallbalg-

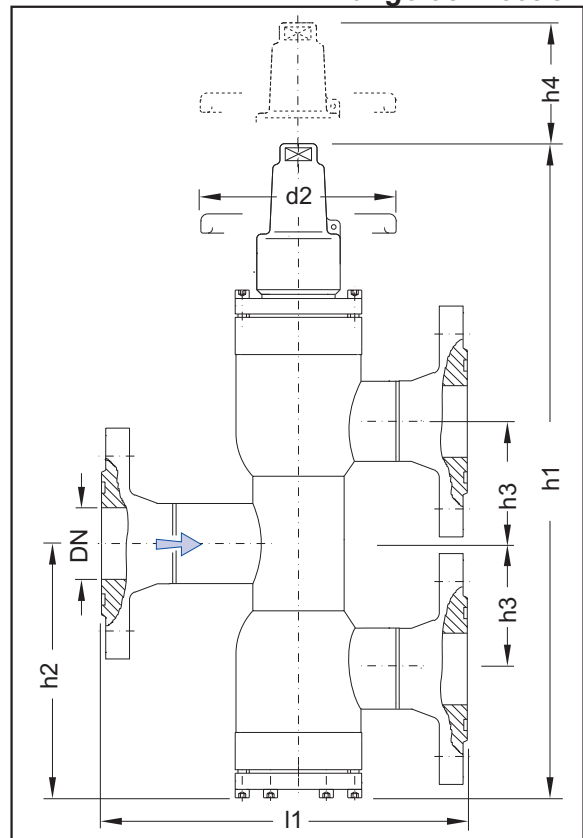
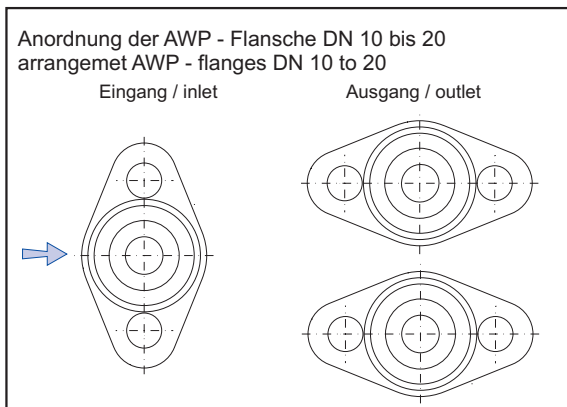
WVB

3 - way - valve - metal bellow-

Flanschanschluß

flange connection

230 20



Einbaulängen / lengths in mm :

DN	Flansch / flange			h1	h2	h3	h4	d2
	AWP	DIN	ANSI					
10	188	195	-	370	117	54,0	170	100
15	188	195	215	370	117	60,0	170	100
20	202	219	243	370	117	60,0	170	100
25	186	178	210	407	140	80,0	215	125
32	196	192	220	423	148	90,0	215	125
40	203	217	252	472	178	107,0	240	150
50	220	230	267	486	178	114,0	240	150
65	267	265	301	558	224	138,0	270	200
80	294	304	328	721	288	162,5	290	200
100	-	358	380	730	293	196,5	300	200

Varianten / variants :

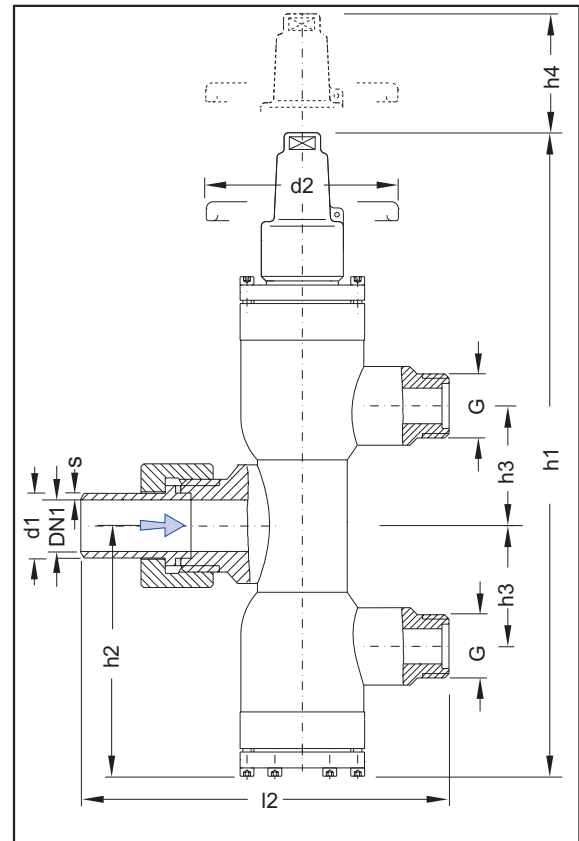
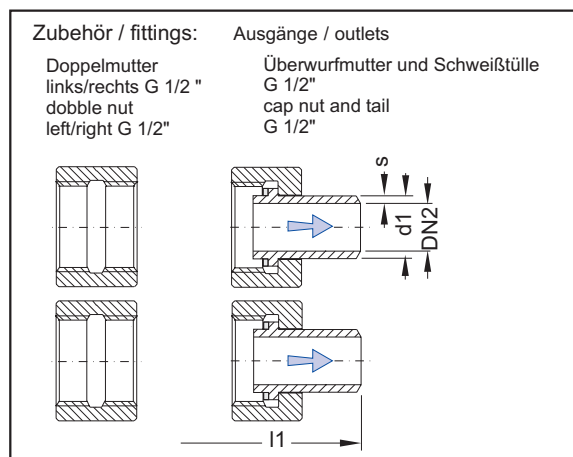
DN	Werkstoff material	Ausführung / design	Flansche / flanges	Zubehör / fittings
10 40	1.0305	Handrad Kappe	DIN AWP ANSI	Flansche kpl/AE flanges cpl/weldingends Reihe/range 1 Reihe/range 2 ANSI Schedule 40
15 50	1.4301	handwheel cap		
20 65		- -		
25 80		x -		
32 100		- x		
		x x		

**Wechselventil -Metallbalg-
Schraubenden**

WVB

**3 - way - valve -metal bellow-
screw ends**

230 60



Einbaulängen / lengths in mm :

	Schraubenden screw ends		Schweißstüllen tails										
	Eingang/inlet	Ausgang/outlet	Eingang/inlet	Ausgang/outlet	Eingang/inlet	Ausgang/outlet	l1	l2	h1	h2	h3	h4	d2
DN1/2	G*	G*	d1	s	d1	s	182	153	370	117	60	170	100
15/8	1"	1/2"L	21,3	2,0	13,5	1,8							

* Whitworth - Rohrgewinde DIN ISO 228, Whitworth - tube thread ISO 228

Varianten / variants :

DN	Werkstoff material	Ausführung/design	Schraubenden screw connection		Zubehör / fittings	
15	1.0305 1.4301	Handrad handwheel	Kappe cap	Eingang inlet	Ausänge outlets	- Überwurfmutter/ cap nut - Schweißstülle/ tail - Doppelmutter links/rechts G 1/2"L / dobble nut left/ right G 1/2"L
		-	-	1"	1/2"links	
		x	-			
		-	x			
		x	x			

Wechselventil -Metallbalg-

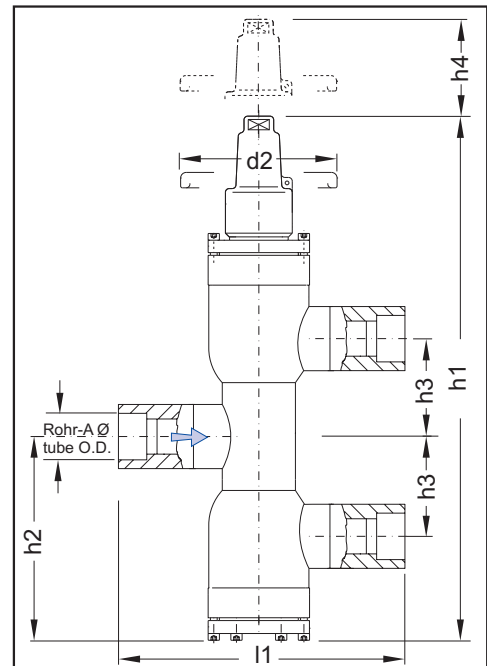
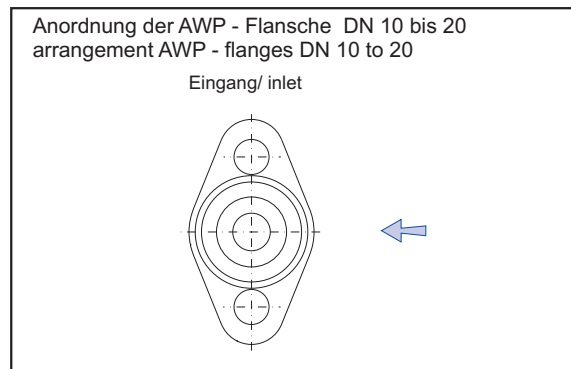
WVB

3 - way - valve -metal bellow-

Lötenden

solder ends

230 80



Einbaulängen / lengths in mm :

		Lötenden (Rohraußen - Ø) / solder ends (tube O.D.)					
DN	RA Ø	l1	h1	h2	h3	h4	d2
10	12	175	370	117	54,0	170	100
15	15	175	370	117	60,0	170	100
15	18	175	370	117	60,0	170	100
20	20	189	370	117	60,0	170	100
20	22	189	370	117	60,0	170	100
25	25	148	407	140	80,0	215	125
25	28	148	407	140	80,0	215	125
32	35	158	423	148	90,0	215	125
32	38	158	423	148	90,0	215	125
40	42	177	472	178	107,0	240	150
50	54	184	486	178	114,0	240	150
65	64	211	558	224	138,0	270	200
65	76	211	558	224	138,0	270	200
80	89	238	721	288	162,5	290	200
100	108	278	730	293	196,5	300	250

Varianten / variants :

DN	Werkstoff material	Ausführung / design	Flansche / flanges	Zubehör / fittings
10 40	1.0305	Handrad	DIN	Flansche kpl/AE
15 50	1.4301	handwheel	AWP	flanges cpl/weldingends
20 65		-	ANSI	Reihe/range 1
25 80		x		Reihe/range 2
32 100		-		ANSI Schedule 40
		x		



Germany - 17291 Prenzlau, Gewerbegebiet Ost, Straße A1 Telefon +49 (0) 3984/ 8559 - 0
http://www.AWPvalves.com e-mail; info@AWPvalves.com Telefax +49 (0) 3984/ 8559 -18

Kälte · Klima · Armaturen GmbH

Notizen / notice

--